

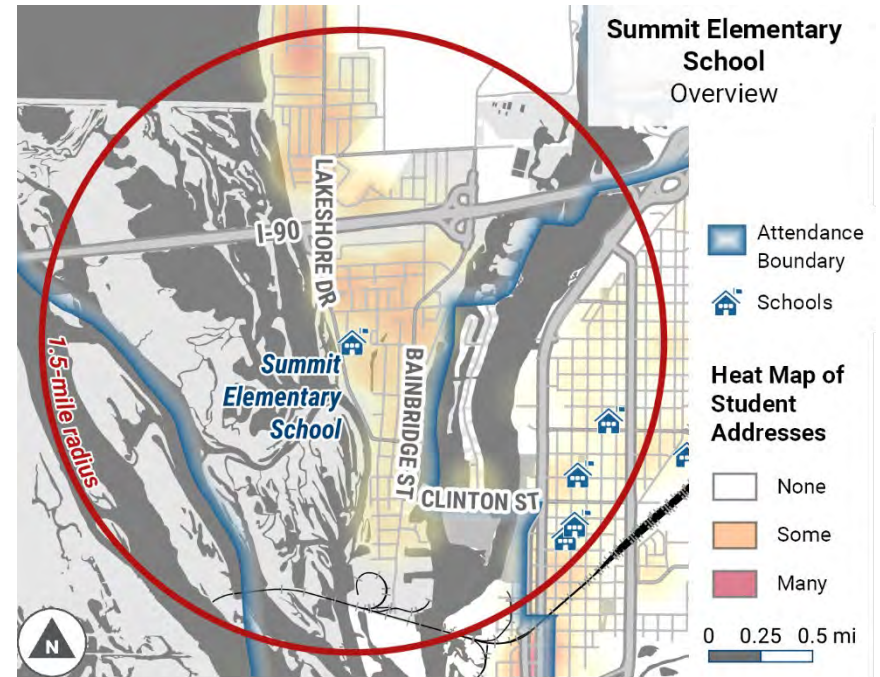
Summit Elementary School Neighborhood Infrastructure Plan

About the School	
Address	1800 Lakeshore Drive
Grade Levels	4K – 5
Number of Students	Approximately 340
Number of Students Approved for Free and Reduced Lunch	34 (10%) ^a
Arrival/Dismissal Times	8:00 AM / 2:40 PM

^aSource: Wisconsin Department of Public Instruction, 2018-19

School Travel Modes	% of Students Using Mode ^b
Walk and Bike	6% AM, 6% PM
School Bus	32% AM, 54% PM
Family Vehicle	60% AM, 39% PM

^bSource: La Crosse County Health Department, Fall 2019



Major Streets and Highways	Annual Average Daily Traffic (AADT) ^c	Number of Lanes	Speed Limit
Lakeshore Drive	3,400	2	25 (15 mph in school zone)
Bainbridge Street	9,000	2; parking on both sides	25

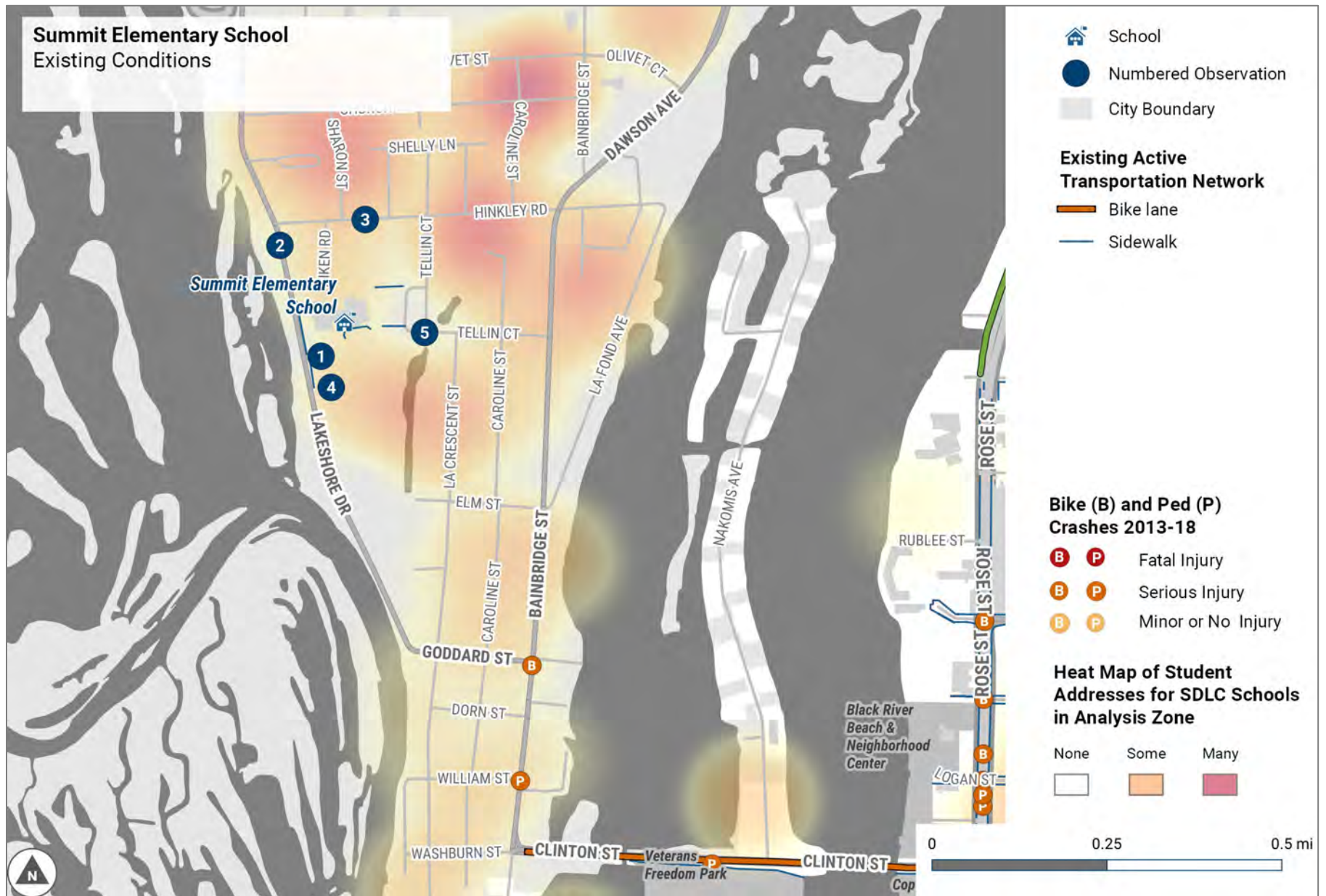
^cSource: Wisconsin DOT Traffic Count Map

Known Safety Concerns at Summit Elementary School

Source of Concern	Safety Concern or Comment
Parent Surveys	<ul style="list-style-type: none"> There are few sidewalks in the area around the school, and on French Island in general. Clinton Street and Nakomis Avenue Intersection does not have a stop light, and there is no sidewalk on the north side of Clinton Street. General traffic concerns, such as fast traffic on Clinton Street, Bainbridge Street, and inattentive drivers on Hinkley Road near the school.
School District Transportation Office	<ul style="list-style-type: none"> Summit Elementary has the only Unusually Hazardous Transportation Area in the School District of La Crosse: the area north of I-90. Students have to walk along Lakeshore Drive, a fairly busy road without sidewalks.

Dismissal Observations

Observation Details	
Observation Date	<ul style="list-style-type: none"> The consultant team observed dismissal on Tuesday, December 3.
Entrances/Exits	<ul style="list-style-type: none"> At dismissal students are released at the same time through two exits. Bused students exit the back, and the remaining students exit the front door.
School Bus Loading	<ul style="list-style-type: none"> School buses line up in the back of the school. Students line up behind colored dots that correspond to the bus they are boarding.
Family Drop-off/Pick-up	<ul style="list-style-type: none"> Families in vehicles picked up their students from the front of the building. Many parents parked in the lot, walked to the door, and walked their students back to the cars. There are two parking lots where parents can park and walk their children back to their vehicles. The overflow lot traffic intersects with the pick-up/drop-off loop. One of the staff crossing guards noted it may be a good idea to stripe a crosswalk between the sidewalk and parking lot.
School Staff Roles	<ul style="list-style-type: none"> Two staff escorted students to buses after school.
Adult Crossing Guards	<ul style="list-style-type: none"> There are no school crossing guards present.
Student Safety Patrols	<ul style="list-style-type: none"> There are no student safety patrols here.



Recommendations in the Summit Elementary Neighborhood

The numbered observations and recommendations in the table below correspond to the points in the Existing Conditions Map (shown on previous page) and the Recommended Infrastructure Map (at the end of this document). Recommendations are flagged as Short Term (1-3 years), Medium Term (2-5 years) and Long Term (5-20 years) projects. There were not enough responses to the April/May 2020 online survey to determine which recommendations were favored by respondents.

#	Location	Observations	Recommendation
1	Driveway entrance to school (off of Lakeshore Drive)	<ul style="list-style-type: none"> Missing sidewalks between Lakeshore Drive and school parking lot/entrance present a barrier to walking and bicycling to school. There is no stop sign at the bottom of the driveway where it intersects with Lakeshore Drive. 	<ul style="list-style-type: none"> Install stop sign at the bottom of the driveway. (Short Term) Construct new sidewalks where there are gaps. (Medium Term)
2	Lakeshore Drive	<ul style="list-style-type: none"> There are missing sidewalks along Lakeshore Drive, which is a high-speed and high-volume street. 	<ul style="list-style-type: none"> Construct sidewalk on east side of Lakeshore Drive where there are gaps. (Medium Term)
3	Hinkley Road	<ul style="list-style-type: none"> Missing sidewalks along Hinkley Road present a barrier to walking and bicycling to school. Many students living in the area need to walk along Hinkley Road. 	<ul style="list-style-type: none"> Construct new sidewalk on one side of Hinkley Road. (Medium Term)
4	Leland Estates Mobile Homes	<ul style="list-style-type: none"> The private drive in manufactured homes community (Jackie Lane) is missing sidewalks. A 10 mph speed limit and low traffic volumes create a shared environment and opportunity for walking and biking. 	<ul style="list-style-type: none"> No recommendation
5	Tellin Court	<ul style="list-style-type: none"> Tellin Court is missing sidewalks. Low speeds and low traffic volumes, along with stair and path connections to the school property, present a relatively safe route for walking to school. 	<ul style="list-style-type: none"> Construct new sidewalks on one side of Tellin Court. (Medium Term)

