

## Notice of Proposed Rate Increase Stormwater Utility Customers of the City of La Crosse Wisconsin

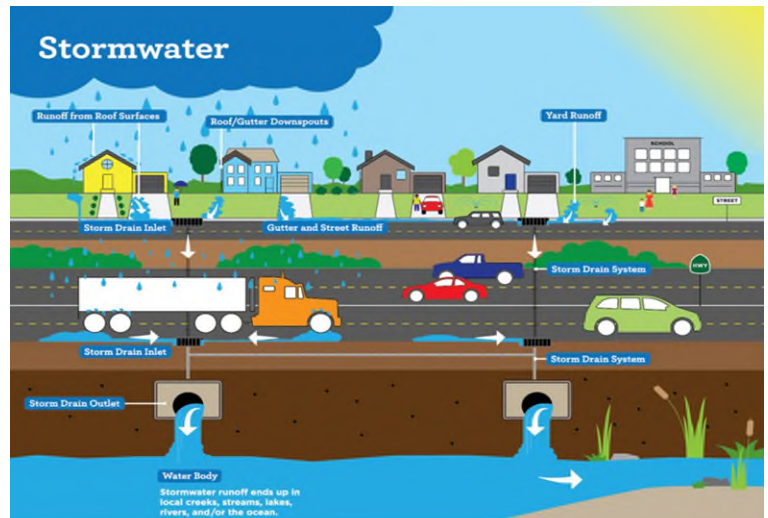
This is notice that the La Crosse Stormwater Utility has conducted a Rate Study which is proposing a rate increase effective July 1, 2025. This increase will be reflected on the quarterly billing statements beginning in October 2025. The Stormwater Utility was established in 2011 and is an enterprise fund for which stormwater related revenues and expenditures are separate from the City of La Crosse's general tax levy, and rates have not increased since its inception. The rate increase is needed due to significant increases in operating expenses and capital project costs over the past decade, and to ensure the financial health of the Stormwater Utility.

### Why do we need a Stormwater Utility Fee?

The stormwater system in La Crosse captures runoff from rain and melting snow that flows off building rooftops, driveways, lawns, streets, parking lots, and construction sites that then drain to stormwater pipes underground which is then discharged to a local body of water since these developed areas do not allow water to soak into the ground. Stormwater runoff is not treated like wastewater before it is discharged.

Just as we all contribute to the stormwater system, we all receive the benefits of the Utility. Those benefits are many, including:

- Fulfilling our Federal and State stormwater permit requirements
- Extensive water quality sampling/impaired waters monitoring
- Illicit discharge detection and elimination
- Cleaning of storm drains, curbs, swales, and stormwater pipes
- Street sweeping
- Flood reduction projects
- Stormwater infrastructure maintenance and mapping
- Construction site erosion prevention and site inspections
- Education programs and trainings



The effect of the increase for residential and non-residential customers is based on the number of ERUs assigned to the customer's property. Each property in the City is assigned a number of equivalent runoff units (ERU's) based on the amount of impervious surface area. One ERU equals 2,841 Sq Ft of impervious surface. All residential properties (single family, duplex and triplex) are assigned one ERU. Non-residential properties, including condominiums, multi-family units (over 4 dwelling units), parking lots, and properties used for commercial, industrial, or governmental purposes, are assigned ERU's based on the total square footage of impervious surface divided by 2,841 sq ft, with a minimum charge of \$.4 ERUs.

The proposed rate increase will be going to the F & P Committee meeting on June 5, 2025 and the Common Council on June 12, 2025. The proposed fixed rate would increase from \$53.92 per year per ERU, to \$118.64 per year per ERU, or approximately \$9.89 per month. There is a proposal for an additional 22% increase on January 1, 2026 with inflationary increases of 3% per year between 2027 and 2029.

For additional information on the La Crosse Stormwater Utility, visit [www.cityoflacrosse.org/utilities](http://www.cityoflacrosse.org/utilities).